

**Tasks for students of International faculty,  
specialty of “Dentistry”  
“The locomotor system”**

Topic. Muscles of shoulder girdle and shoulder. Muscles of forearm and hand. The fasciae and topography of the upper limb.

1. A 45-year-old man was admitted to a traumatology center after a shoulder home accident. Examination has shown the absence of extension, adduction and pronation functions of the shoulder. What muscle has been injured?

A. Supraspinatus

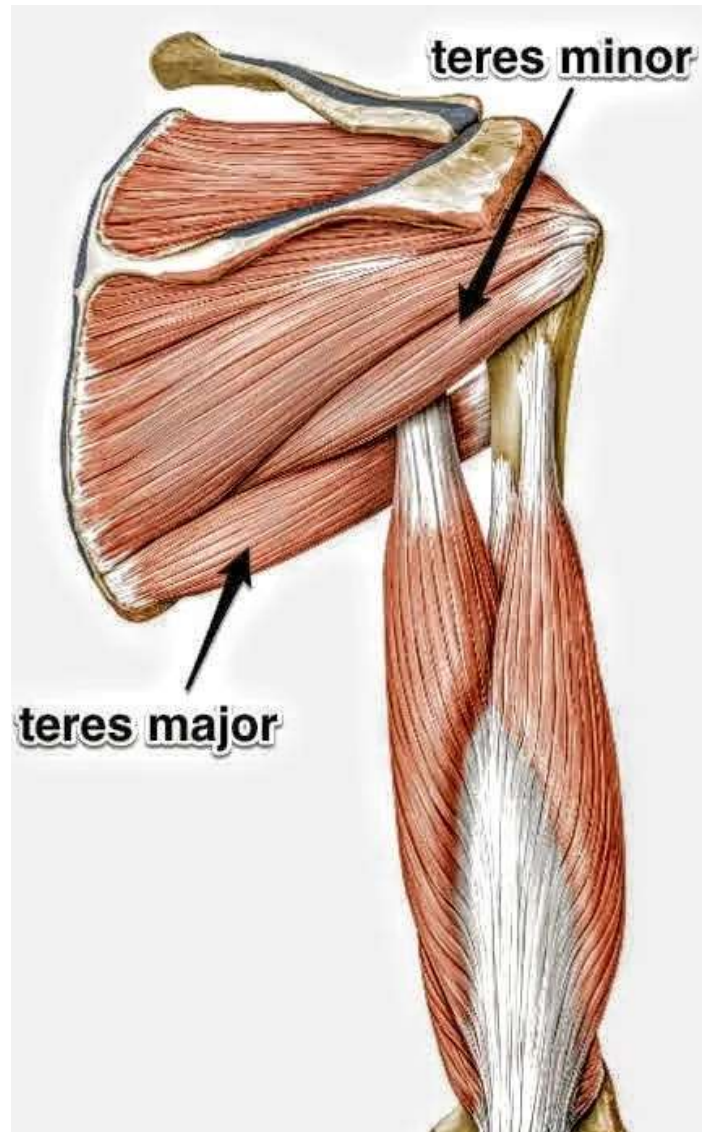
B. Subscapularis

C. Teres minor

D. Infraspinatus

E. Teres major

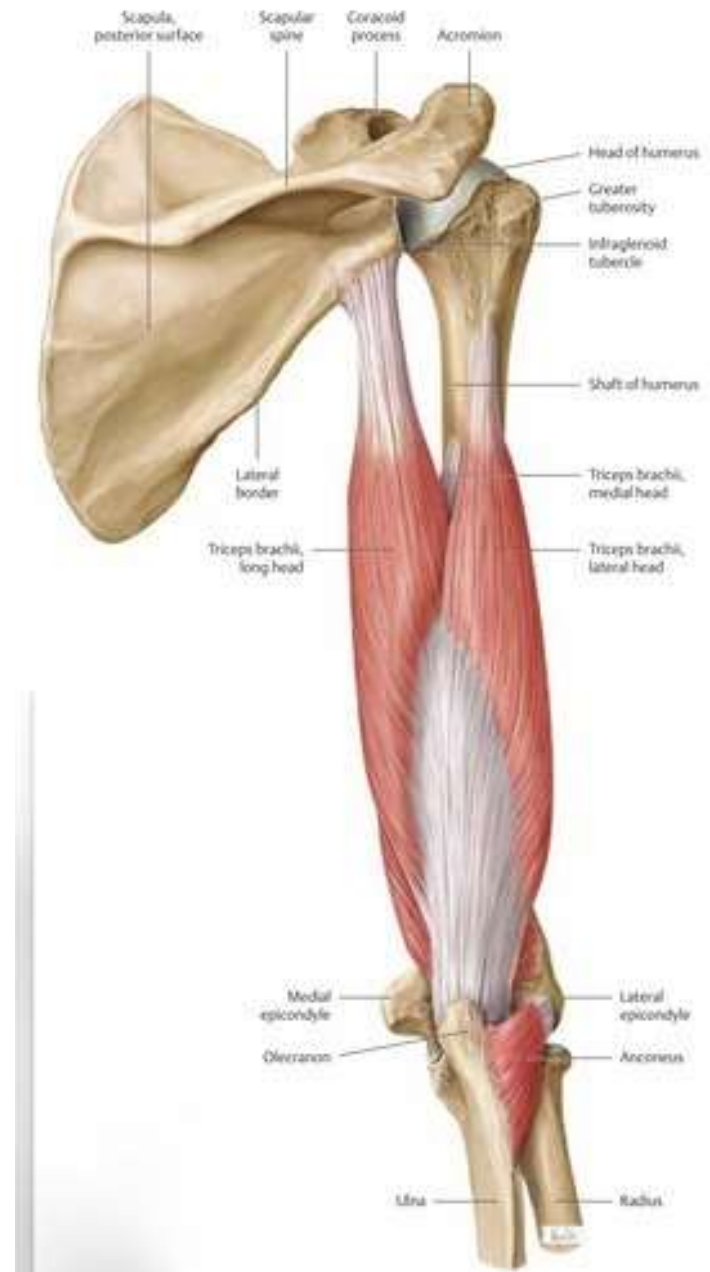
## E. Teres major



2. An X-ray examination has a comminuted fracture of the infraglenoid tubercle of a patient with a mass in the shoulder joint area. Tendon of what muscle head beginning in this place has been damaged?

- A. A long head of m. triceps brachii
- B. A long head of m. biceps brachii
- C. A medial head of m. triceps brachii
- D. A lateral head of m. triceps brachii
- E. A short head of m. biceps brachii

## A. A long head of m. triceps brachii

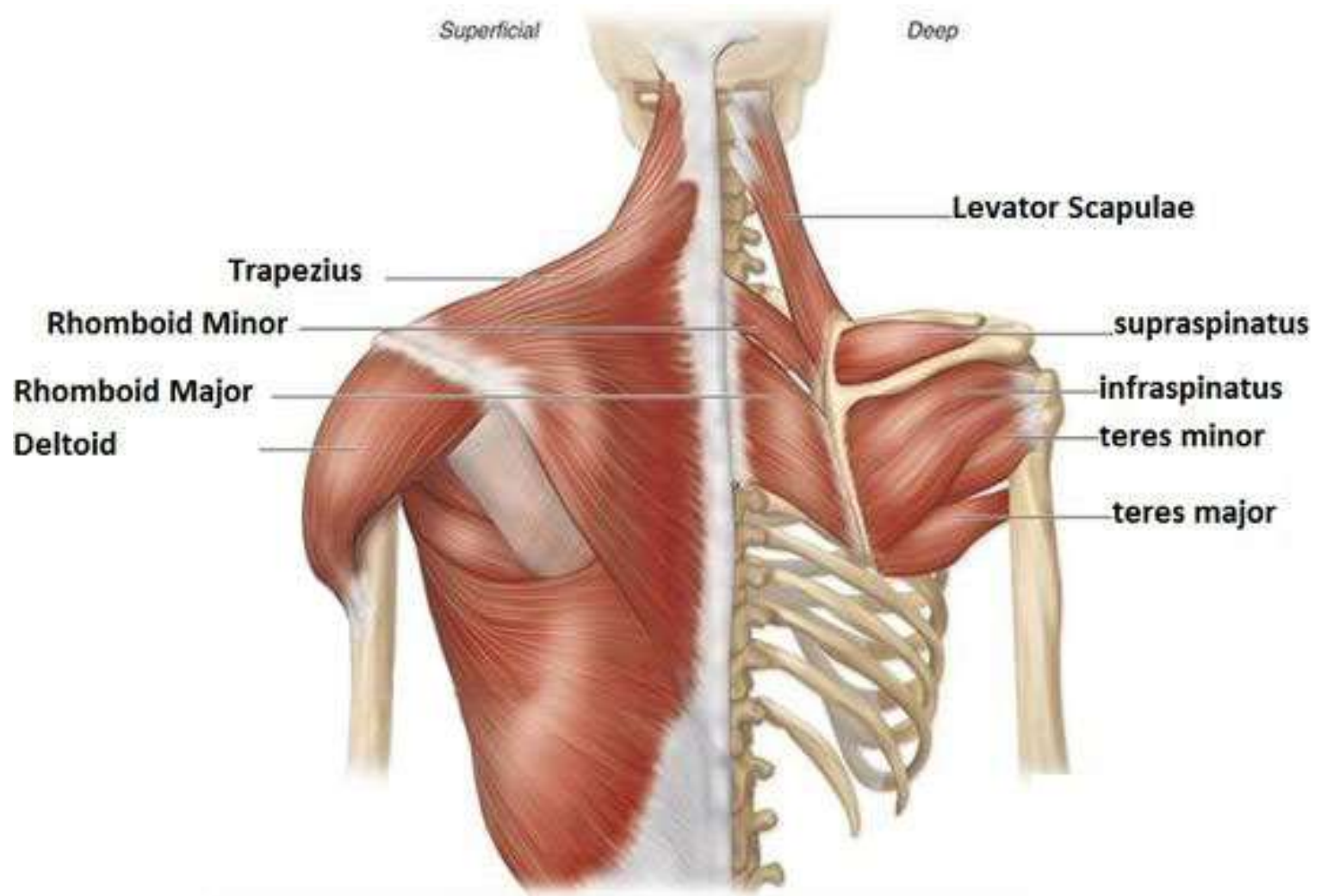


3. A patient complains of impossible external rotation caused by a shoulder trauma in the great tubercle of humeri area. What muscles are injured?

- A. Supraspinatus and teres major
- B. Infraspinatus and teres minor
- C. Subscapular and coracobrachial
- D. Deltoid and supraspinatus
- E. Teres major and teres minor



## B. Infraspinatus and teres minor



4. A man can not bend his arm his arm in the elbow joint because of a wound of interior .shoulder surface. Which muscle is injured?

A. Anconeus

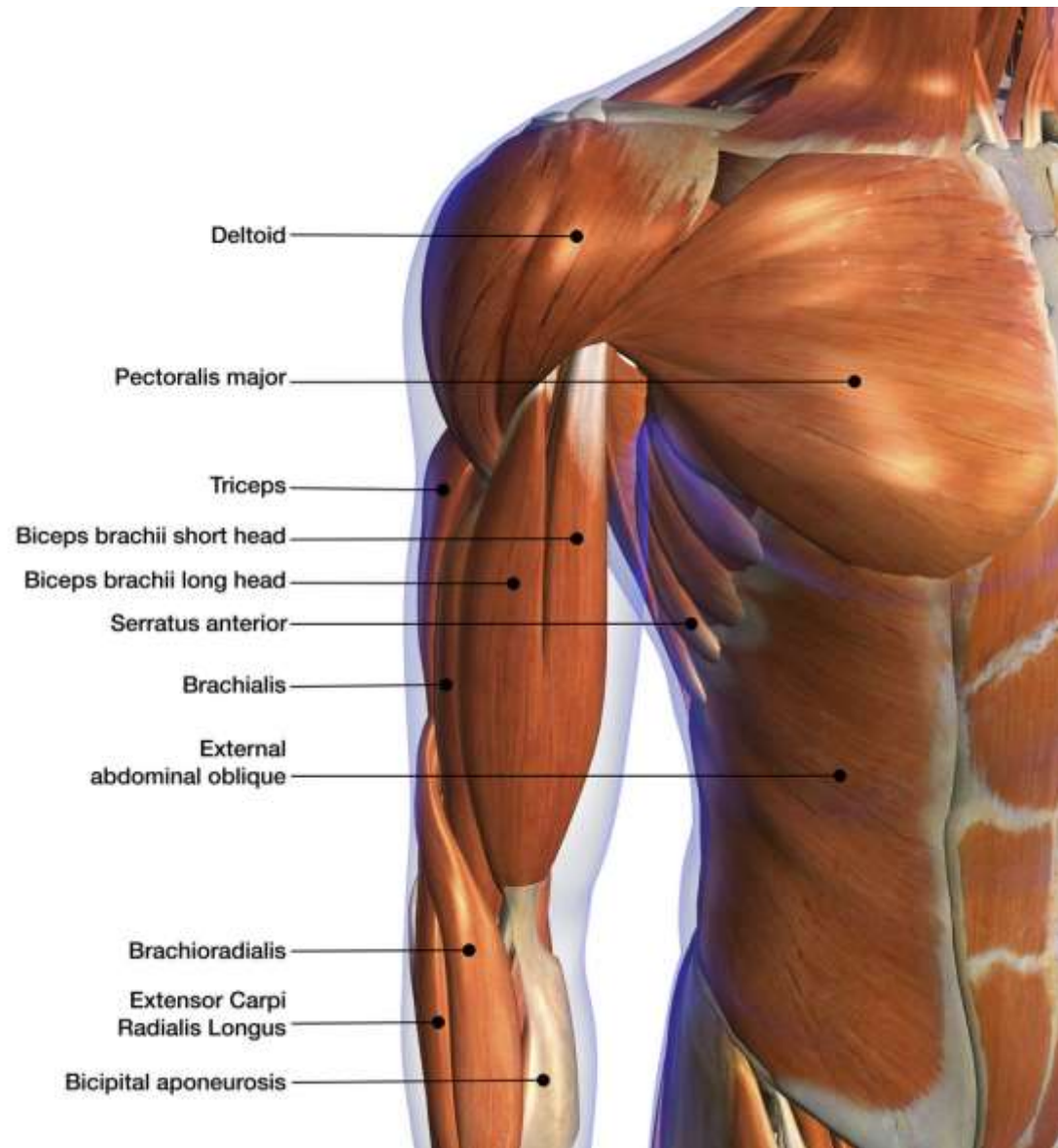
B. Deltoid.

C. Pectoral major

D. Triceps brachial

E. Biceps brachial

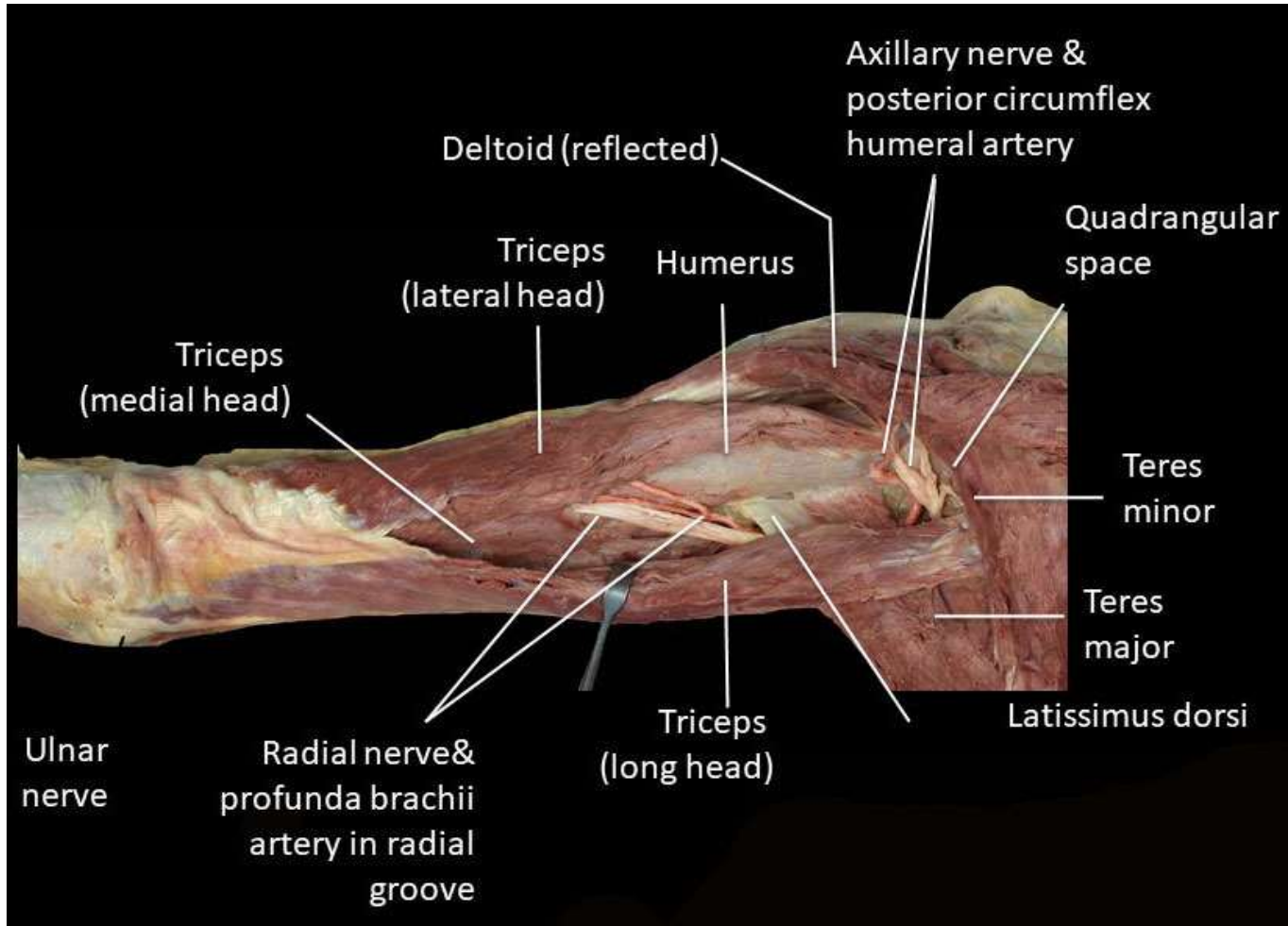
## E. Biceps brachial



5. A patient has a fissure of the shaft of humerus posterior surface diagnosed. Symptoms of the radial nerve injury in the region of humeromuscular canal are observed. What is this canal limited by?

- A. Posterior surface of humerus and triceps muscle of arm
- B. Anterior surface of humerus, biceps muscle of arm
- C. Anterior surface of humerus, coracobrachial
- D. Anterior surface of humerus, brachial
- E. Posterior surface of humerus, anconeus

A. Posterior surface of humerus and triceps muscle of arm

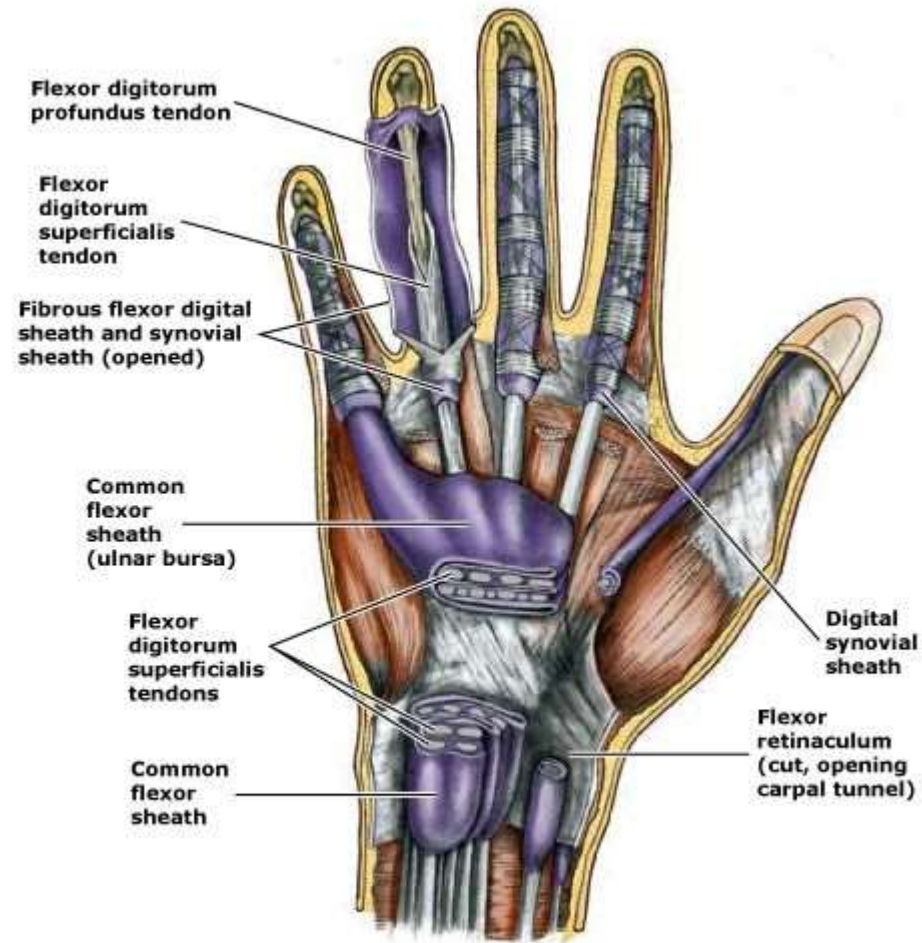


6. Little finger felon was complicated by the phlegmon of hand and forearm. Purulent process has spread over:



- A. Vagina communis tendinum musculorum flexorum
- B. Vagina tendinis musculi flexoris pollicis longi
- C. Canal is carpalis
- D. Vagina tendinis musculi flexoris carpi radialis
- E. Interfascial compartments

## A. Vagina communis tendinum musculorum flexorum

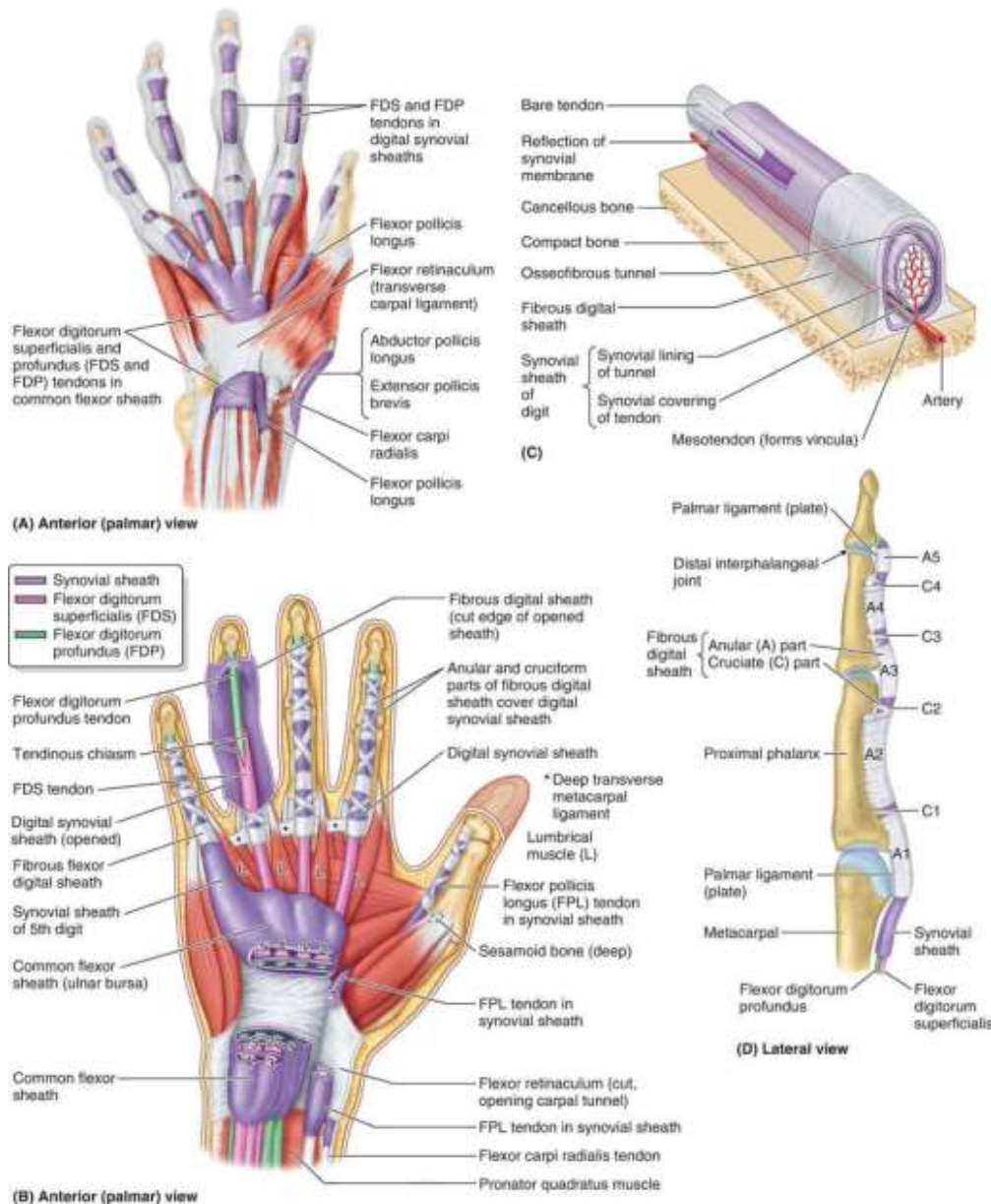


7. Little finger felon was complicated by the phlegmon of hand and forearm.

Purulent process has spread over:

- A. Long flexor of thumb
- B. Short flexor of thumb
- C. Short abductor muscle of thumb
- D. Opposer muscle of thumb
- E. Adductor of thumb

## A. Long flexor of thumb (flexor pollicis longus)



8. A 39-year-old man has been taken to a traumatology center with a left hand trauma. Examination has shown an incised wound in the region of the left hand thumb eminence; the proximal phalanx of the I finger does not bend. What muscle has been damaged?

- A. Adductor of thumb
- B. Long flexor of thumb
- C. Short abductor muscle of thumb
- D. Opposer muscle of thumb
- E. Short flexor of thumb

## E. Short flexor of thumb (the flexor pollicis brevis)





9. A patient has complication of hand movements. Inflammation of common synovial sheath for flexor tendons has been diagnosed. According to anamnesis, a week before the patient punctured wound of a finger. Which finger is injured?

- A. Little finger
- B. Thumb
- C. Middle finger
- D. Index finger
- E. Ring finger

## A. Little finger

