

**Tasks for students of International faculty,
specialty of “Dentistry”
“The locomotor system”**

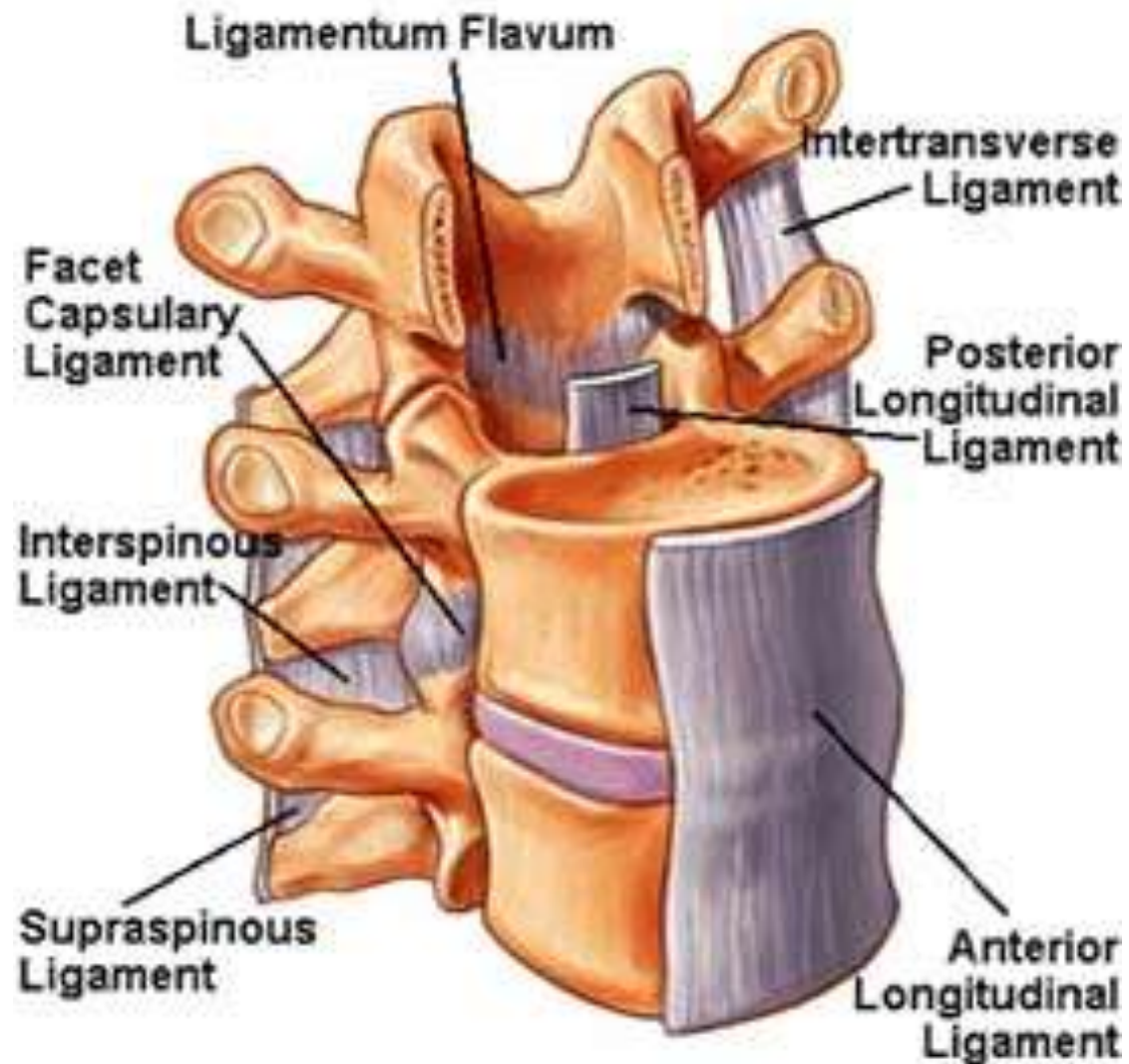
Topic. Syndesmology. Structure and classification of articulations.

Connections of the vertebral column. Vertebral column as a whole. The curvatures of the vertebral column.

1. After a fall from a height a casualty is diagnosed a compression fracture of lumbar vertebra. The curvature of lumbar lordosis has sharply increased. Injury of what ligaments can cause such change of vertebral column curvature?

- A. Intertraverse
- B. Posterior longitudinal
- C. Yellow
- D. Supraspinal
- E. Anterior longitudinal

E. Anterior longitudinal



2. X-ray examination of a patient has shown a thoracic spine disk herniation. What kind of vertebrae conjugation has undergone pathological changes?

A. Syndesmosis

B. Diarthrosis

C. Synchondrosis

D. Articulation

E. Synostosis

C. Synchondrosis

