

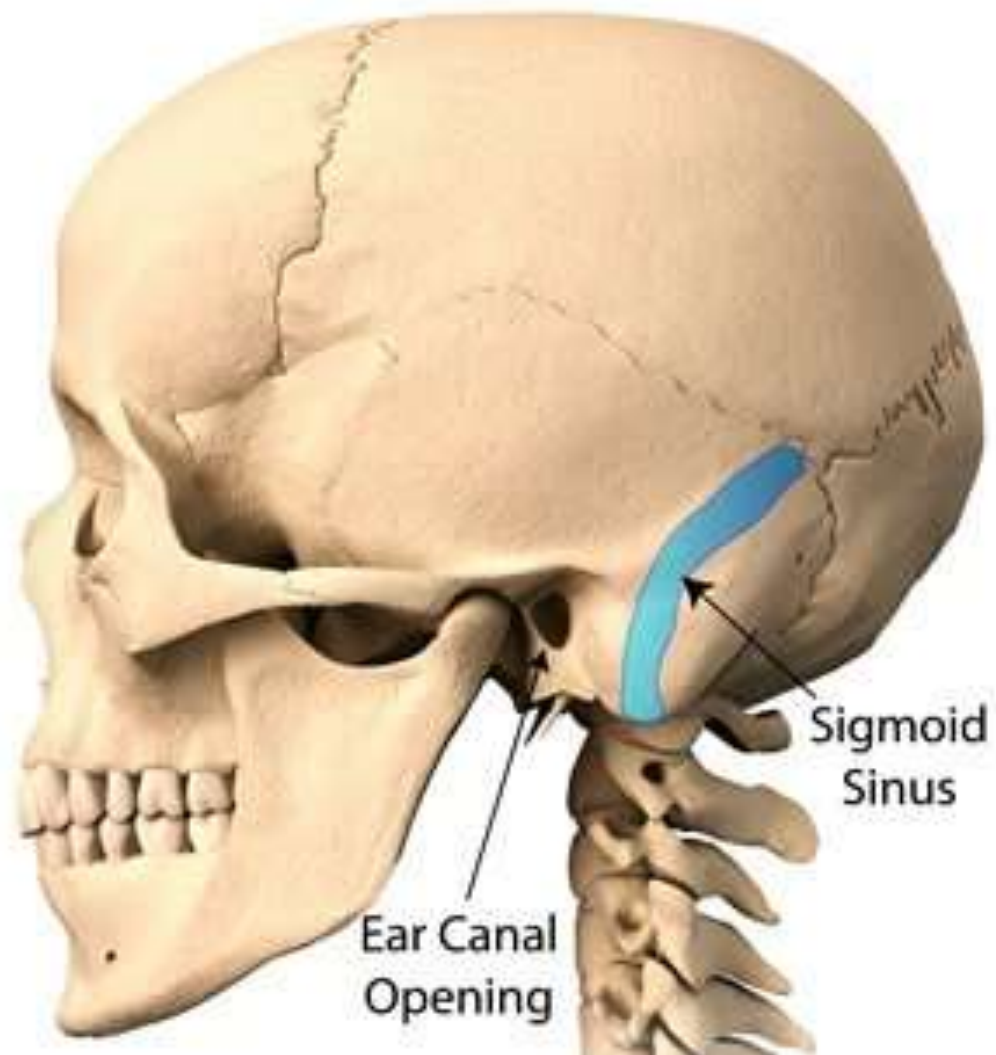
**Tasks for students of International faculty,
specialty of “Dentistry”
“The locomotor system”**

Topic. Temporal bone. The development, structure, parts. Canals of temporal bone. Tympanic cavity, its walls.

1. A child, 6 years old, has suppurative inflammation of the middle ear complicated with suppurative inflammation of mastoid cells. Mastoidotomy is necessary. About what venous sinus must a surgeon remember to avoid its traumatizing?

- A. Sigmoid
- B. Superior sagittal
- C. Inferior sagittal
- D. Transverse
- E. Cavernous

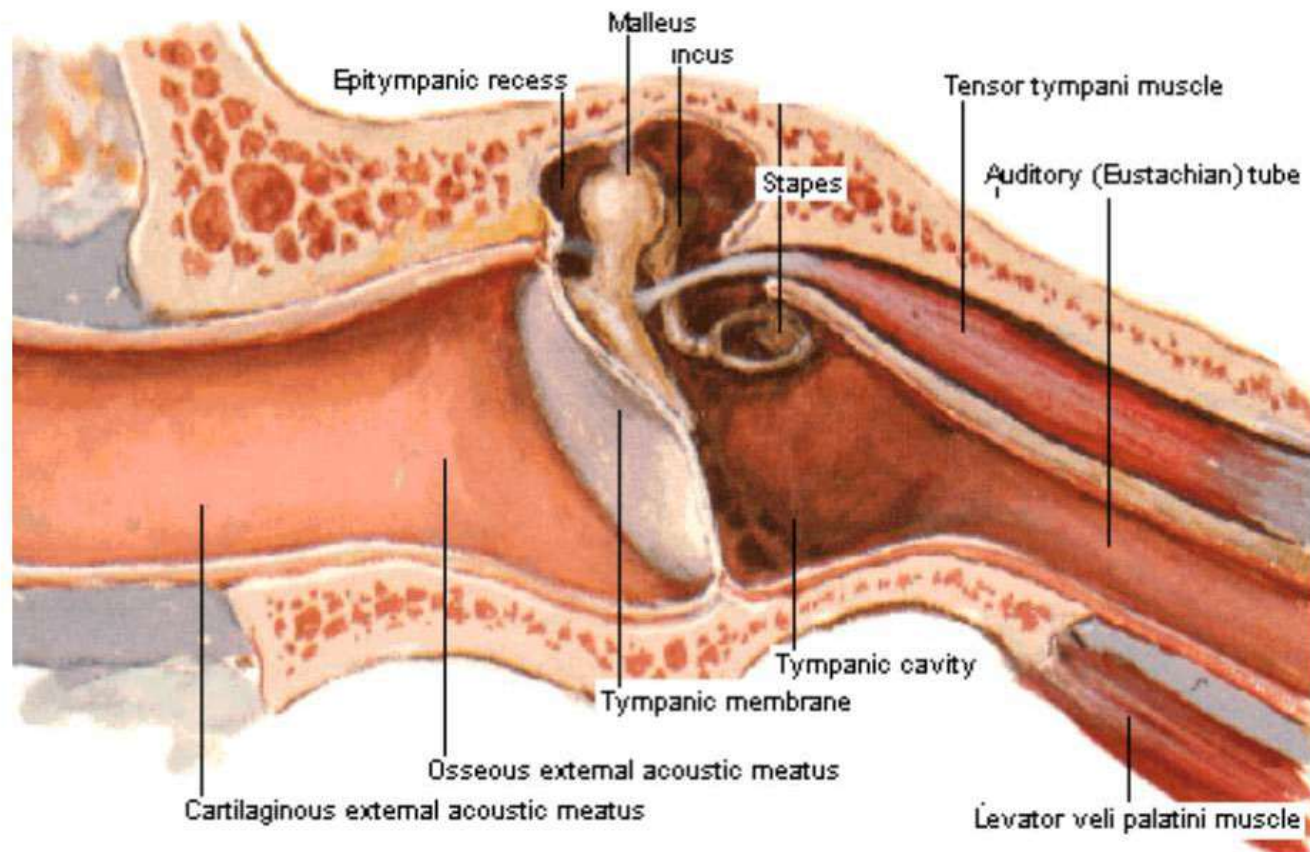
A. Sigmoid



2. A child, 5 years old, was admitted to an otolaryngologic department with suppurative inflammation of the middle ear. Disease began with nasopharynx inflammation. Through what temporal bone canal could the infection get to the tympanic cavity?

- A. Musculotubal canal
- B. Tympanic canaliculus
- C. Carotid canal
- D. Canaliculus for chorda tympani
- E. Caroticotympanic canaliculi

A. Musculotubal canal



3. An 8-year-old boy with purulent otitis has the infection spread from the tympanic cavity into the bulb of internal jugular vein. Such complication develops in case of one of the tympanic cavity walls thinning. What wall is it?

A. Medial

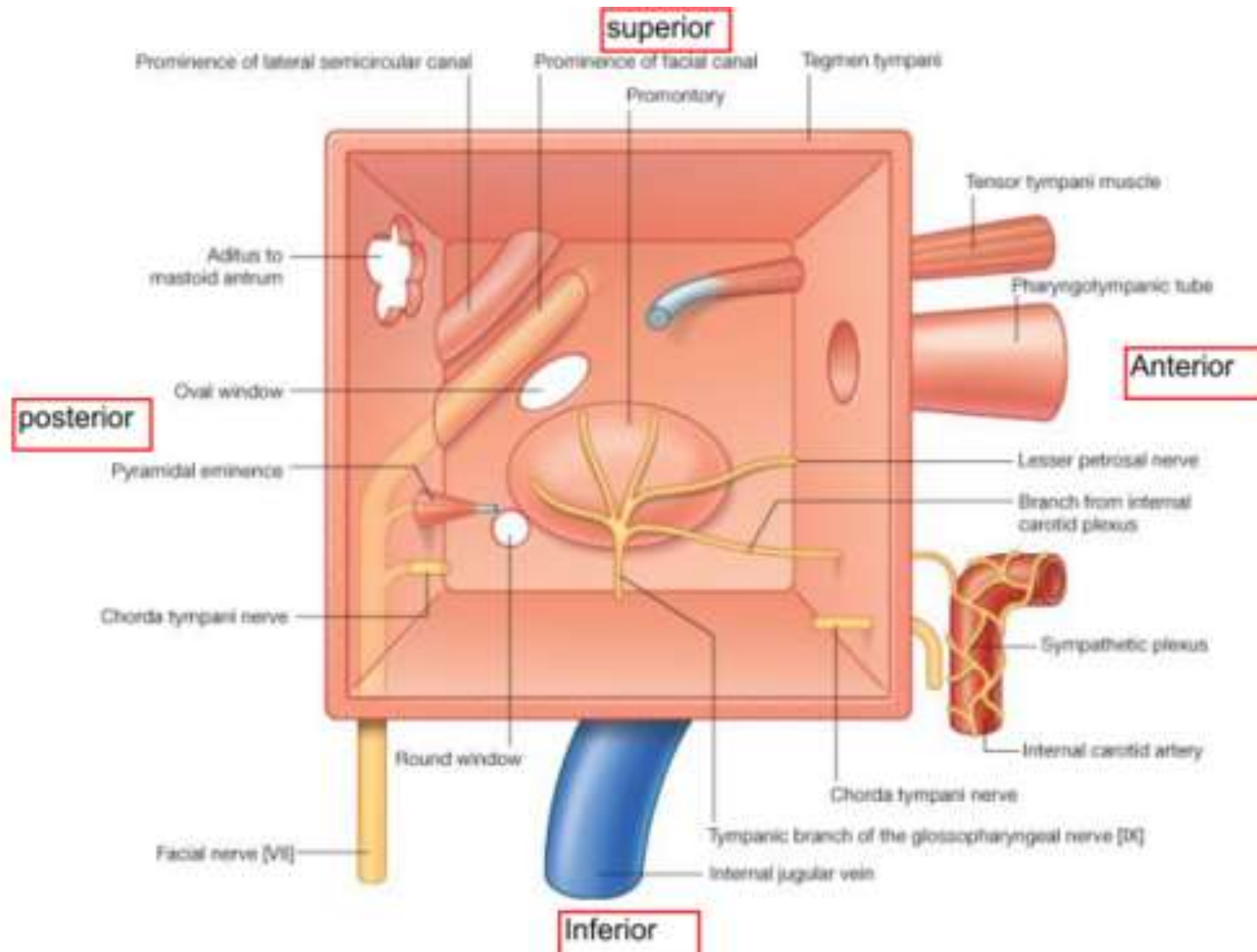
B. Superior

C. Inferior

D. Lateral

E. Anterior

C. Inferior



4. The roof of tympanic cavity was damaged by purulent otitis. To what cranial fossa can the pus get through the roof from the tympanic cavity?

- A. Middle
- B. Posterior
- C. Anterior
- D. Orbit
- E. Pterygopalatine

A. Middle

MIDDLE CRANIAL FOSSA

